

Name: \_\_\_\_\_

Science Period \_\_\_\_\_

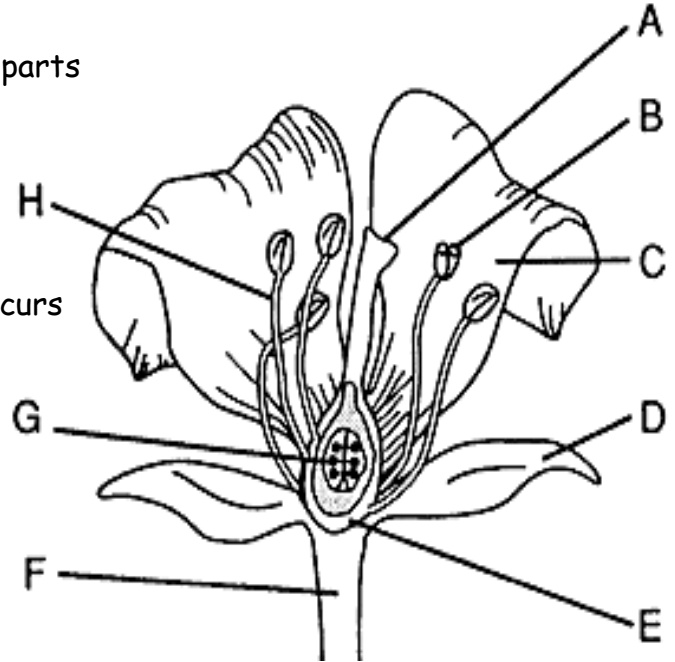
Date: \_\_\_\_\_

Flowers & Seeds WS

### Section A: Interpreting the Diagram

Match the parts of the diagram with the descriptions below. Write the letter(s) of the correct part in the space provided.

- \_\_\_\_\_ 1. Colorful, protects reproductive parts
- \_\_\_\_\_ 2. Female reproductive parts
- \_\_\_\_\_ 3. Protects a flower bud
- \_\_\_\_\_ 4. Produces pollen
- \_\_\_\_\_ 5. Location where fertilization occurs
- \_\_\_\_\_ 6. Male reproductive parts
- \_\_\_\_\_ 7. Becomes a fruit
- \_\_\_\_\_ 8. Stigma
- \_\_\_\_\_ 9. Ovule
- \_\_\_\_\_ 10. Anther
- \_\_\_\_\_ 11. Petal
- \_\_\_\_\_ 12. Ovary
- \_\_\_\_\_ 13. Filament
- \_\_\_\_\_ 14. Sepal



### Section B: True or False

Put **true** on the line if the statement is true. If it is *false*, **correct** the underlined term.

- \_\_\_\_\_ 1. Sepals are a special kind of leaf which protects the flower bud.
- \_\_\_\_\_ 2. The stamen is the female reproductive part in a flower.
- \_\_\_\_\_ 3. A flower usually has only one pistil.
- \_\_\_\_\_ 4. Imperfect flowers have both male and female reproductive parts.
- \_\_\_\_\_ 5. Petals protect the reproductive parts of the plant.
- \_\_\_\_\_ 6. The flower is the reproductive organ in a plant.
- \_\_\_\_\_ 7. The reproductive organ in a flower contains the pistil and the sepal.

OVER →

## Section C: Completion

Complete the sentences using the choices given below.

**fertilization    germination    ovary    embryo    testa    stigma    cotyledon    seed**

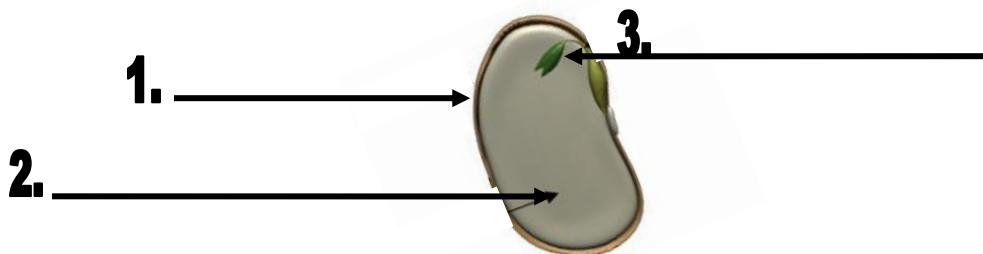
1. The top of the pistil, the \_\_\_\_\_ has a sticky surface.
2. The pollen grain grows downward into the \_\_\_\_\_.
3. When the sperm and egg meet \_\_\_\_\_ takes place.
4. The fertilized egg becomes an \_\_\_\_\_.
5. The stored food is called the \_\_\_\_\_.
6. The embryo, cotyledon, and testa make up the \_\_\_\_\_.
7. If conditions are right, the seed begins to sprout. This is known as \_\_\_\_\_.
8. The embryo and stored food are covered by the \_\_\_\_\_.

## Section D: Matching

- |                       |                          |
|-----------------------|--------------------------|
| _____ 1. Egg          | A. young plant           |
| _____ 2. Pollen grain | B. male gamete           |
| _____ 3. Embryo       | C. food for plant embryo |
| _____ 4. Cotyledon    | D. contains ovules       |
| _____ 5. Ovary        | E. female gamete         |



## Section E: Labeling



## Section F: Numerical Ordering

Put these steps in the correct order they occur (1-9)

- \_\_\_\_\_ a. Sperm from pollen fertilizes the egg in the ovules.
- \_\_\_\_\_ b. Germination occurs.
- 1   c. Pollen is produced in the stamen; the egg is produced in the pistil.
- \_\_\_\_\_ d. A seed begins to develop.
- \_\_\_\_\_ e. A new plant appears.
- \_\_\_\_\_ f. Pollen is transferred from the stamen to the pistil.
- \_\_\_\_\_ g. The ovary develops into a fruit.
- \_\_\_\_\_ h. The seeds are scattered.
- \_\_\_\_\_ i. A pollen tube grows down the pistil from the pollen to the egg.

